

PROGRESSIVE *report*

New Products and Updates from Progressive Components

NPE 2024 Issue

PROGRESSIVE ROCKS ANOTHER NPE!

Progressive's 11th NPE is in the books and has once again exceeded our expectations. Attendees responded overwhelmingly positively to our new v16 Catalog, released at the show.

From new precision standard Components to exclusive Mold Monitoring and Asset Tracking options, this latest release delivers advancements that will assist injection molders and mold builders for years ahead.

Contact Progressive at **1-800-269-6653** or visit **procomps.com/v16** for a new v16 Catalog or CADalog® to integrate these standards into yours!



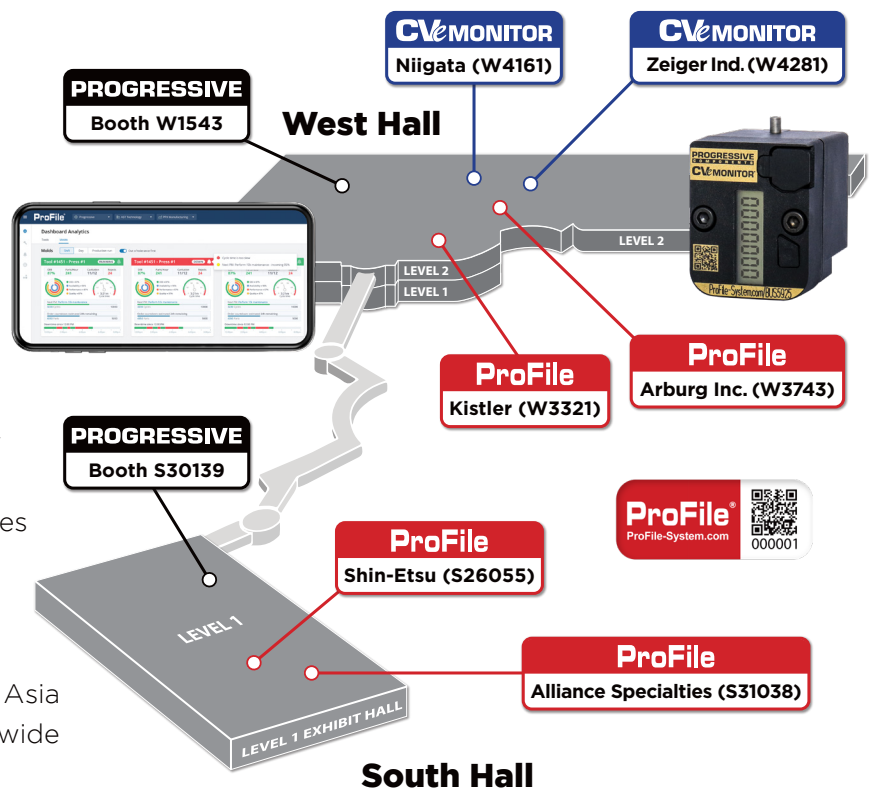
REAL-TIME MONITORING ON THE NPE SHOW FLOOR

Molds run everywhere, and Progressive demonstrated on the NPE show floor that they can be monitored from anywhere.

Progressive partnered with industry leaders to configure molds throughout the expo hall to demonstrate actual mold data being collected and managed from Pro's booth.

With wireless functionality now integrated into ProFile and new Bluetooth-enabled CVe Monitors on molds, users gained real-time insights into production status and key performance indicators. And, ProFile offers a Preventative Maintenance system, facilitates efficient Work Order management, and generates historical OEE data.

Attendees who have visited global events such as K2019 in Germany and Chinaplas in Asia reported never before seeing an exhibition-wide deployment of monitoring technology.



PROGRESSIVE PARTNERS:

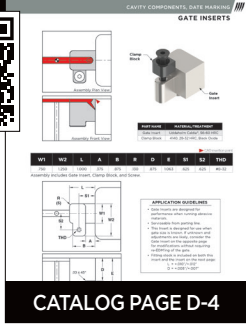
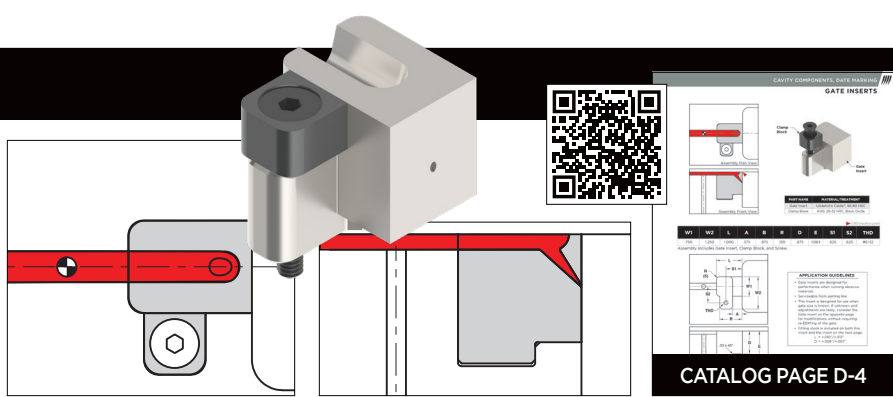
M.R. Mold & Engineering Zeiger Industries Alliance Specialties Arburg Kistler
Shin-Etsu Roembke Manufacturing & Design Niigata Industrial Molds Inc.

NPE2024
The Plastics Show



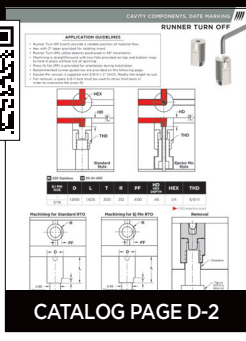
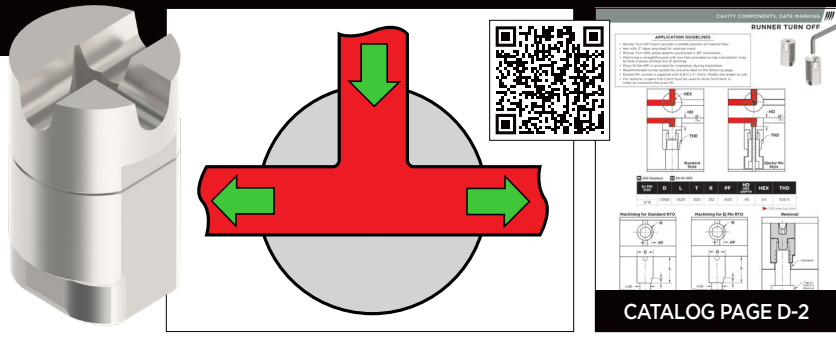
GATE INSERTS

Progressive now offers a compact, off-the-shelf standard **Gate Insert** for when abrasive materials open gates. Its compact design is serviceable from the parting line and provides an option to adjust gate size while the mold remains in the press.



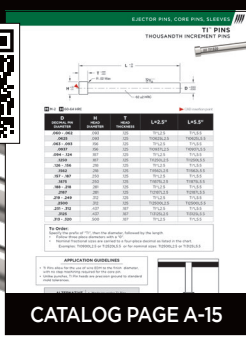
RUNNER TURN OFF'S

With reliable click-in-place positioning at 45° increments, **Runner Turn Offs** are available in styles with and without a center ejector pin. Convenient holding during the machining of the pre-hardened 420 SS assembly, which is then located into position with a press fit flat.



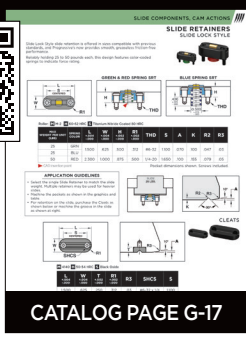
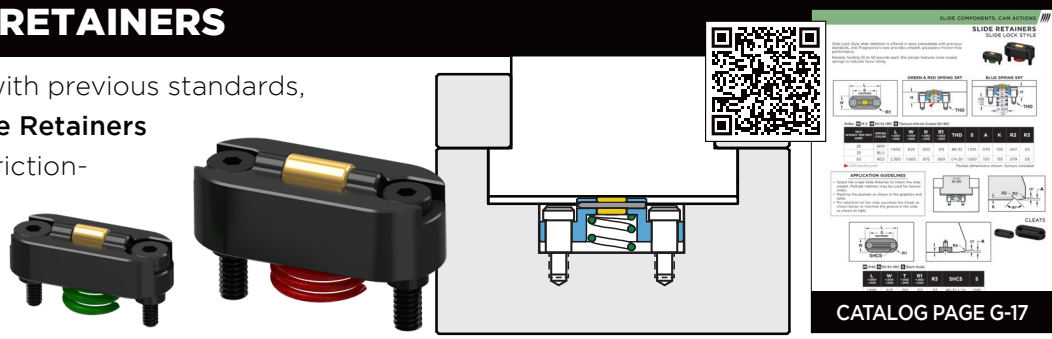
THOUSANDTH INCREMENT PINS

New, longer length **TI™ Pins**, in 267 new standard sizes are now available. Designed to fit into small, crowded cavity and core inserts, Progressive's TI Pins are manufactured with hardened M-2 steel and available in diameters from .060" to .320" in both 2.5" and 5.5" lengths. Cut-to-length and custom options are also available.



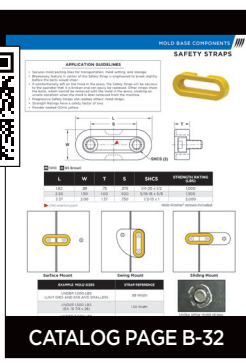
SLIDE LOCK STYLE RETAINERS

Offered in sizes compatible with previous standards, Progressive's **Slide Lock Style Retainers** provide smooth, greaseless friction-free performance. Reliably holding 25 to 50 pounds each, color-coded springs indicate force rating.



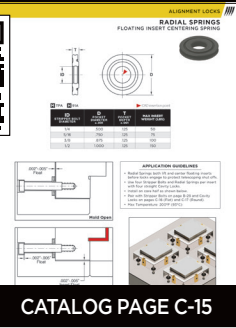
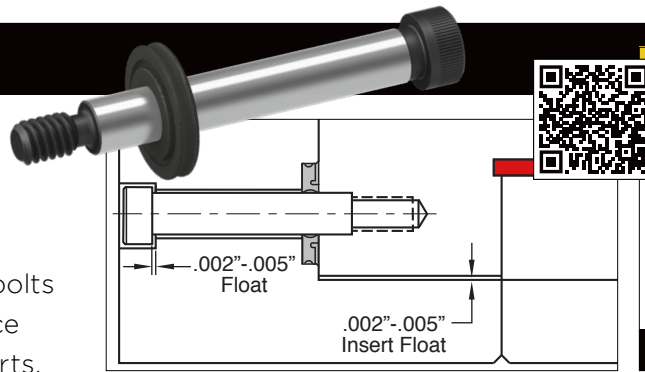
SAFETY STRAPS

Pro's **Safety Straps** safely secure parting lines during mold transportation and storage. Straps are designed to not shear the bolts and instead feature an engineered break point. This allows for an easy replacement of the strap versus moving the mold base before machining-out the sheared bolt. Safety Straps are available in three sizes, compatible with previous standards.



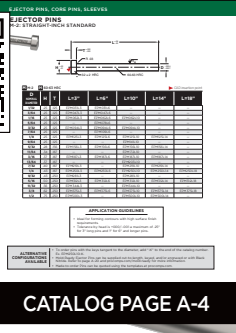
RADIAL SPRINGS

For optimum protection of telescoping shut-offs, Progressive's **Radial Springs** both lift and center inserts before Cavity Interlocks engage. Rather than rigidly bolting inserts to the mold base, stripper bolts allow the Radial Spring's pressure to reduce side forces and pressure on locks and inserts.



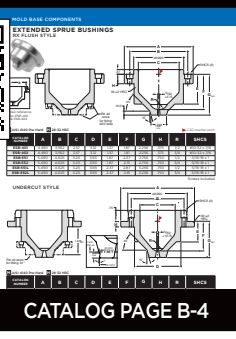
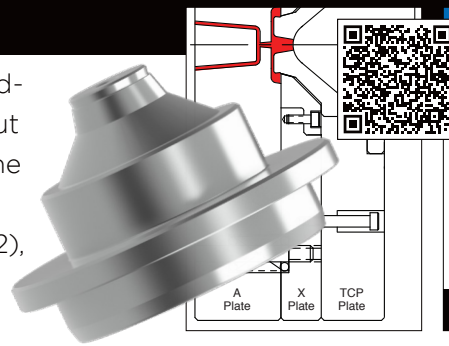
M-2 PINS

M-2 Ejector Pins are hardened to 60-63HRC, which at its through-hardened core provides wear resistance against dishing when molding abrasive materials. Ideal for accepting contours with high surface-finish requirements, M-2 Pins can be used as either ejector pins or core pins and are suited for high-heat applications. Available in straight and shoulder styles with diameters ranging from 1/32-1/2" with lengths between 3"-18". Keyed, cut-to-length and custom options are also available.



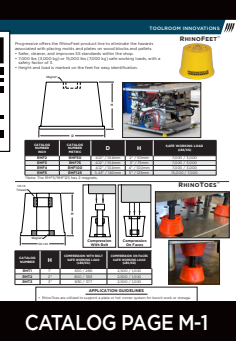
ESB UNDERCUT STYLE

Progressive's new **ESB Undercut Style** expands the Extended Sprue Bushing offering for 3-plate molds. The undercut feature pulls the sprue and separates the material from the finished part to provide direct gating into single-cavity molds. Manufactured from 4140 Prehard Steel (HRC 28-32), this ESB is unique to the industry and previously made by mold builders as a custom component.



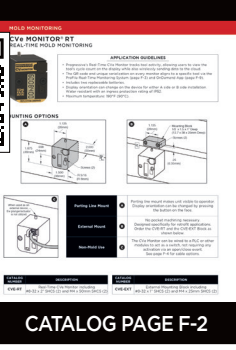
RHINOFEET FOR LARGE MOLDS

Designed to elevate molds and large items off the shop floor safely, Progressive's **RhinoFeet™** are offered in 2", 3", and 4" heights and now a taller 5" height to accommodate larger tools and plates by providing additional clearance for forklifts. Independently tested to hold 15,000 lbs. each and designated a safety factor of 3, a 60,000 lb. mold can be elevated with four 5" RhinoFeet.



CVe MONITOR RT

Pro's **CVe Monitor® RT** real-time mold monitor tracks tool activity and communicates via Bluetooth® access to ProFile® a web and mobile-based application. The CVe RT allows the tool's cycle count and other data to be viewed on the device, provides wireless access to information utilizing the ProFile app, and, with additional hardware, can send real-time data to ProFile in the cloud for global access.



TOOLING FOR TOMORROW

Progressive's Tooling For Tomorrow initiative supports the industry by donating to mold-related technical programs.

Through our sponsorship of the American Mold Builders Association's annual awards, recipients each receive \$5000 for the technical program of their choice.

This year, the AMBA Mold Builder of the Year Award went to Roger Fox of Accede Mold & Tool (Rochester, NY), and Roger has selected the Edison Career and Technical High School as the recipient.

The AMBA Tooling Trailblazer of the Year award recognizes excellence in making an impact in a



AMBA Mold Builder of the Year 2024

region's technical education programming. This year, United Tool & Mold (Liberty, SC) was awarded this distinction, and their grant (provided by Progressive) went to the Pickens County Career and Technology Center



AMBA 2024 Tooling Trailblazer of the Year

for use in their STEM classes.

In addition to these awards, Progressive also sponsors the SPE's Mold Designer of the Year award, which comes with a check for \$1000. This year's recipient was Keith LaSage of Westminster Tool, and Keith has named UMass-Lowell the recipient.



SPE 2023 Mold Designer of the Year.

Since its inception over 20 years ago, Progressive has donated over \$500,000 of product and monetary contributions to further support Tooling For Tomorrow!

i-WARRIORS - HEROES FROM THE AMERICAN MOLD

The second annual iWarriors West Coast Golf Outing, hosted by Rick Finnie and GERALYN ANDERSON of M.R. Mold & Engineering (Brea, CA), raised \$17,500 to provide pre-loaded and personalized iPads to severely injured vets to assist with their return, recovery, and reintegration.

Progressive and our iWarriors volunteers are grateful to all the golfers and sponsors who made this



event possible. We invite you to mark your calendars for the third annual event—February 7, 2025 (the Friday after MD&M/Plastec West 2025)—which looks to be even bigger and better!



For our Midwest and East Coast colleagues and friends, we are excited to announce that the annual Alliance Golf Outing will be held Friday, September 20th, and the United Tool & Mold Golf Outing will be held on October 25, 2024.

More details and online registration will be available soon at iwarriors.org/golf.

For additional information on the iWarriors program, to make a donation, become a sponsor, or purchase branded merchandise from the iWarriors Shop, please visit www.iwarriors.org.