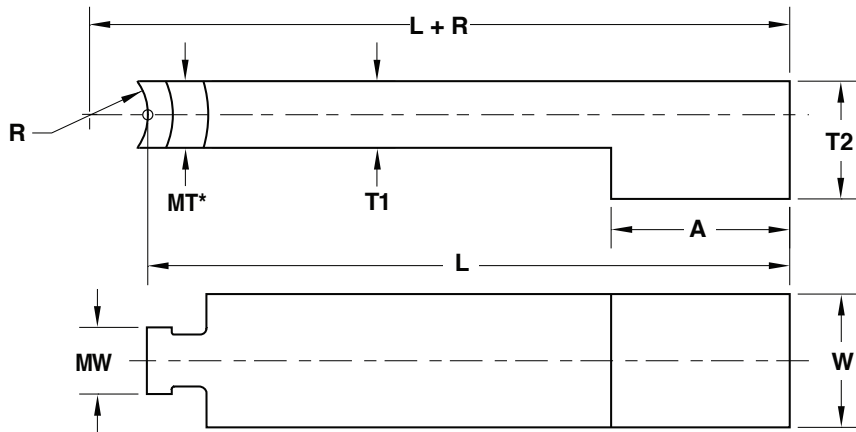




# UNILIFTER® CORE BLADES: L-SHAPED



Series	R	MT*	MW
MiniLifter	.250	.31	.24
UniLifter	.406	.49	.49
XL Series	.875	1.00	1.00
Metric	10mm	15mm	10mm
Metric Mini	12mm	6mm or T	6mm

STANDARD TOLERANCES		
T1	+0.000 -0.001	+0.0 -0.025
T2	+0.020 -0.000	+0.5 -0.0
W	+0.000 -0.001	+0.0 -0.025
A	+0.020 -0.000	+0.5 -0.0
L	+0.020 -0.000	+0.5 -0.0
	INCH	METRIC

\*Note: MT may increase for strength.  
 Note: Altering the MT & MW dimensions (Minimum Thickness and Width of heel area) is not recommended.

### Series:

- MiniLifter**  
U-Coupling = UCM50
- Metric MiniLifter**  
U-Coupling = UCMM16
- Metric**  
U-Coupling = UCMM22
- UniLifter**  
U-Coupling = UCU87
- XL Series**  
U-Coupling = UCX175

### Material:

- H-13**  
Hardness = 38-42 HRC
- H-13**  
Hardness = 48-50 HRC
- DC53**  
Hardness = 58-60 HRC
- S-7**  
Hardness = 54-56 HRC
- S-7 with Assembly Detent**  
(For C-Series Applications.  
Not available in XL Series.)

CORE BLADE #1			
Dimension		Tolerance	
<b>T1</b>	<input type="checkbox"/> Standard	+	
		-	
<b>T2</b>	<input type="checkbox"/> Standard	+	
		-	
<b>W</b>	<input type="checkbox"/> Standard	+	
		-	
<b>A</b>	<input type="checkbox"/> Standard	+	
		-	
<b>L</b>	<input type="checkbox"/> Standard	+	
		-	
<b>Quantity:</b>			

CORE BLADE #2			
Dimension		Tolerance	
<b>T1</b>	<input type="checkbox"/> Standard	+	
		-	
<b>T2</b>	<input type="checkbox"/> Standard	+	
		-	
<b>W</b>	<input type="checkbox"/> Standard	+	
		-	
<b>A</b>	<input type="checkbox"/> Standard	+	
		-	
<b>L</b>	<input type="checkbox"/> Standard	+	
		-	
<b>Quantity:</b>			

**E-MAIL TECH@PROCOMPS.COM**

CONTACT:	COMPANY NAME:	PHONE #:
REFERENCE #:	ACCOUNT #:	E-MAIL ADDRESS: