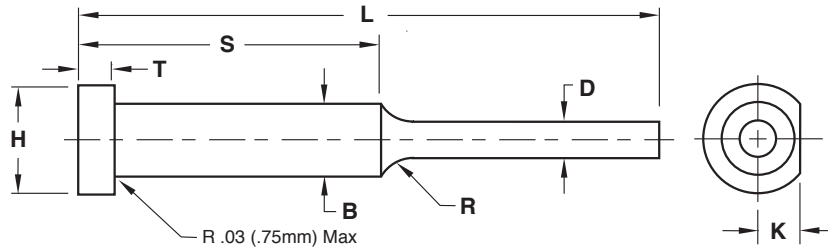




EJECTOR PINS

SINGLE STEP



Material:

- Ejector Pin
 Material = H-13
 Core = 48-50 HRC
 Surface = 65-70 HRC

Treatment:

- Chrome
 Black Nitride

Other:

Material	Core Hardness	Surface Hardness	Treatment

STANDARD TOLERANCES		
D	-0.0004 -0.0007	-0.01 -0.02
B	+0.000 -0.001	+0.00 -0.02
L	+0.06 -0.00	+1.5 -0.0
H	+0.000 -0.010	+0.00 -0.2
T	+0.000 -0.002	+0.00 -0.05
K	+0.000 -0.002	+0.00 -0.05
S	±0.03	±1.0
	INCH	METRIC

Note: Black Nitride may not be applicable on all sizes or may require tolerance adjustment. Progressive will verify when quoting.

PIN #1			
Dimension	Tolerance		
D	<input type="checkbox"/> Standard	+	
		-	
B	<input type="checkbox"/> Standard	+	
		-	
L	<input type="checkbox"/> Standard <input type="checkbox"/> Finished Length (+.001/- .000)	+	
		-	
S	<input type="checkbox"/> Standard	+	
		-	
H	<input type="checkbox"/> Standard	+	
		-	
T	<input type="checkbox"/> Standard	+	
		-	
K	<input type="checkbox"/> Standard	+	
		-	
R	<input type="checkbox"/> To Suit	+	
		-	
Quantity:			

PIN #2			
Dimension	Tolerance		
D	<input type="checkbox"/> Standard	+	
		-	
B	<input type="checkbox"/> Standard	+	
		-	
L	<input type="checkbox"/> Standard <input type="checkbox"/> Finished Length (+.001/- .000)	+	
		-	
S	<input type="checkbox"/> Standard	+	
		-	
H	<input type="checkbox"/> Standard	+	
		-	
T	<input type="checkbox"/> Standard	+	
		-	
K	<input type="checkbox"/> Standard	+	
		-	
R	<input type="checkbox"/> To Suit	+	
		-	
Quantity:			

E-MAIL TECH@PROCOMPS.COM

CONTACT:	COMPANY NAME:	PHONE #:
REFERENCE #:	ACCOUNT #:	E-MAIL ADDRESS: