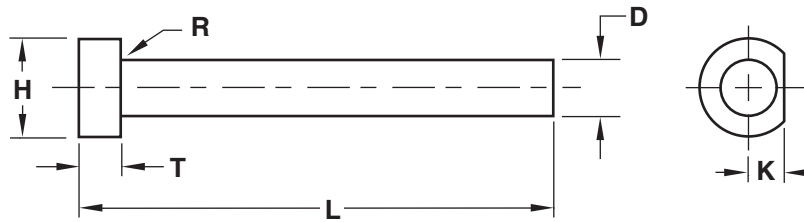




# CORE/TI PINS STRAIGHT



**Material:**

- Core Pin**  
Material = H-13  
 Hard = 50-55 HRC  
 Soft = 30-35 HRC

- TI Pin**  
Material = M-2  
Core = 60-64 HRC

**Treatment:**

- Chrome (H-13 Only)
- Black Nitride (H-13 Only)

**Other:**

Material	Core Hardness	Surface Hardness	Treatment

STANDARD TOLERANCES		
D	CORE PINS	
	+0.0010	+0.02
+0.0005		
D	TI PINS	
	+0.0003	+0.008
-0.0000		
T	+0.000	+0.00
	-0.002	-0.05
H	+0.000	+0.0
	-0.010	-0.2
L	+0.060	+1.5
	-0.000	-0.0
K	+0.000	+0.00
	-0.002	-0.05
	INCH	METRIC

Note: Black Nitride may not be applicable on all sizes or may require tolerance adjustment. Progressive will verify when quoting.

PIN #1			
Dimension	Tolerance		
<b>D</b>	<input type="checkbox"/> Standard Core Pin		+
	<input type="checkbox"/> Standard TI Pin		-
<b>H</b>	<input type="checkbox"/> Standard		+
			-
<b>T</b>	<input type="checkbox"/> Standard		+
			-
<b>L</b>	<input type="checkbox"/> Standard		+
	<input type="checkbox"/> Finished Length (+.001/-0.000)		-
<b>K</b>	<input type="checkbox"/> Standard		+
			-
<b>R</b>	<input type="checkbox"/> .03 (.75mm)		+
	<input type="checkbox"/> .06 (1.5mm)		-
<b>Quantity:</b>			

PIN #2			
Dimension	Tolerance		
<b>D</b>	<input type="checkbox"/> Standard Core Pin		+
	<input type="checkbox"/> Standard TI Pin		-
<b>H</b>	<input type="checkbox"/> Standard		+
			-
<b>T</b>	<input type="checkbox"/> Standard		+
			-
<b>L</b>	<input type="checkbox"/> Standard		+
	<input type="checkbox"/> Finished Length (+.001/-0.000)		-
<b>K</b>	<input type="checkbox"/> Standard		+
			-
<b>R</b>	<input type="checkbox"/> .03 (.75mm)		+
	<input type="checkbox"/> .06 (1.5mm)		-
<b>Quantity:</b>			

**E-MAIL TECH@PROCOMPS.COM**

CONTACT:	COMPANY NAME:	PHONE #:
REFERENCE #:	ACCOUNT #:	E-MAIL ADDRESS: