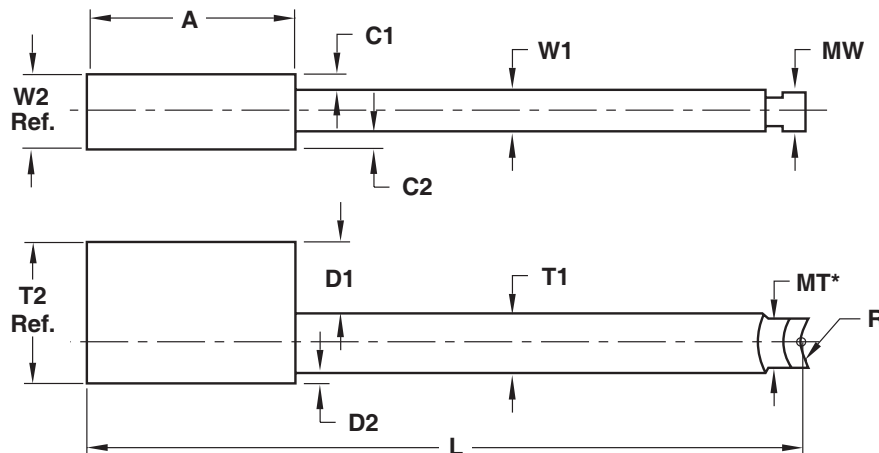




UNILIFTER® CORE BLADES: T-SHAPED

STANDARD TOLERANCES		
T1	+0.000 -0.001	+0.0 -0.025
W1	+0.000 -0.001	+0.0 -0.025
A	+0.020 -0.000	+0.5 -0.0
L	+0.020 -0.000	+0.5 -0.0
	INCH	METRIC

Series	R	MT*	MW
MiniLifter	.250	.31	.24
UniLifter	.406	.49	.49
XL Series	.875	1.00	1.00
Metric	10mm	15mm	10mm
Metric Mini	12mm	6mm or T	6mm



*Note: MT may increase for strength.

Note: Altering the MT & MW dimensions (Minimum Thickness and Width of heel area) is not recommended.

Series:

- MiniLifter**
U-Coupling = UCM50
- Metric MiniLifter**
U-Coupling = UCMM16
- Metric**
U-Coupling = UCMM22
- UniLifter**
U-Coupling = UCU87
- XL Series**
U-Coupling = UCX175

Material:

- H-13**
Hardness = 38-42 HRC
- H-13**
Hardness = 48-50 HRC
- DC53**
Hardness = 58-60 HRC
- S-7**
Hardness = 54-56 HRC
- S-7 with Assembly Detent**
(For C-Series Applications.
Not available in XL Series.)

CORE BLADES

Dimension	Tolerance					
T1	<input type="checkbox"/> Standard	+	W2	REF		
		-				
T2	REF		C1			+
						-
D1		+	C2			+
		-				-
D2		+	A	<input type="checkbox"/> Standard		+
		-				
W1	<input type="checkbox"/> Standard	+	L	<input type="checkbox"/> Standard		+
		-				
					Quantity:	

E-MAIL TECH@PROCOMPS.COM

CONTACT:	COMPANY NAME:	PHONE #:
REFERENCE #:	ACCOUNT #:	E-MAIL ADDRESS: