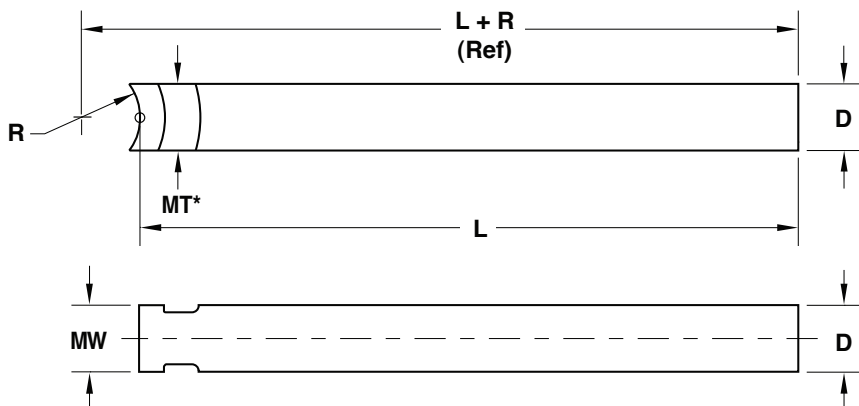




UNILIFTER® CORE BLADES: ROUND



Series	R	MT*	MW
MiniLifter	.250	.31	.24
UniLifter	.406	.49	.49
XL Series	.875	1.00	1.00
Metric	10mm	15mm	10mm

STANDARD TOLERANCES		
D	+0.000	+0.000
	-0.001	-0.025
L	+0.06	+2.0
	-0.00	-0.0
	INCH	METRIC

*Note: MT may increase for strength.

Note: Altering the MT & MW dimensions (Minimum Thickness and Width of heel area) is not recommended.

Series:

- MiniLifter
U-Coupling = UCM50
- UniLifter
U-Coupling = UCU87
- Metric MiniLifter
U-Coupling = UCMM16
- XL Series
U-Coupling = UCX175
- Metric
U-Coupling = UCMM22

Material:

- H-13
Hardness = 38-42 HRC
- S-7
Hardness = 54-56 HRC
- H-13
Hardness = 48-50 HRC
- S-7 with Assembly Detent
(For C-Series Applications.
Not available in XL Series.)
- DC53
Hardness = 58-60 HRC

CORE BLADE #1			
Dimension		Tolerance	
D		<input type="checkbox"/> Standard	+
			-
L		<input type="checkbox"/> Standard	+
			-
Quantity:			

CORE BLADE #2			
Dimension		Tolerance	
D		<input type="checkbox"/> Standard	+
			-
L		<input type="checkbox"/> Standard	+
			-
Quantity:			

CORE BLADE #3			
Dimension		Tolerance	
D		<input type="checkbox"/> Standard	+
			-
L		<input type="checkbox"/> Standard	+
			-
Quantity:			

CORE BLADE #4			
Dimension		Tolerance	
D		<input type="checkbox"/> Standard	+
			-
L		<input type="checkbox"/> Standard	+
			-
Quantity:			

E-MAIL TECH@PROCOMPS.COM

CONTACT:	COMPANY NAME:	PHONE #:
REFERENCE #:	ACCOUNT #:	E-MAIL ADDRESS: