



*“Our customers expect reliable, consistent performance. By specifying Progressive, we deliver long-term, profitable results.”*

Jeff Jacquemin, R&D/Leverage

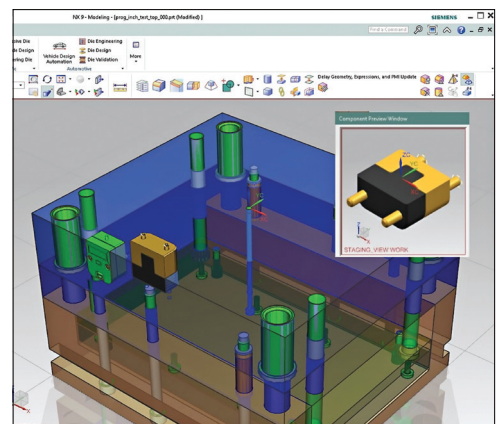
## CUSTOMER SATISFACTION

Manufacturers of high production tooling know that taking shortcuts today will lead to problems tomorrow. Progressive meets your most demanding requirements:

- Tight tolerance, through-hard Ejector Pins
- Alignment Locks proven and guaranteed to last
- Innovations for sequencing multi-parting line tools

It's your name on the outside of every mold, and with Progressive inside, your customers achieve maximum productivity and long-term profitability.

**PROGRESSIVE**  
**C O M P O N E N T S**



VISIT THE NEW [PROCOMPS.COM](http://PROCOMPS.COM)  
FOR ENHANCED E-COMMERCE AND  
CAD GEOMETRY AVAILABILITY