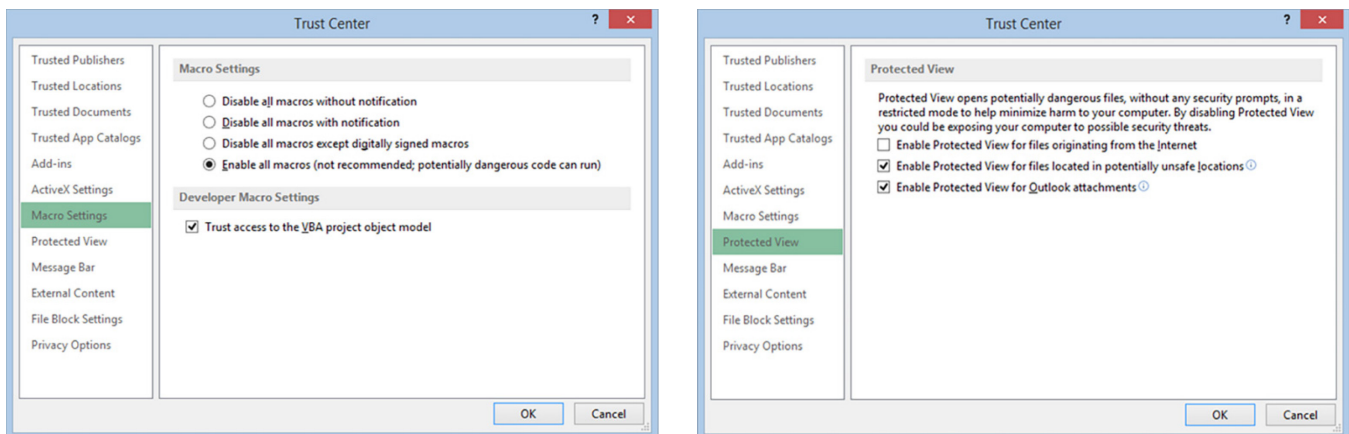


Excel Configuration for use with OnDemand Software

OnDemand software uses Microsoft Excel to generate the Reports containing your Monitor's molding data. You must have Excel 2007 or greater installed and configured so that OnDemand can use it.

Adjusting Excels Settings

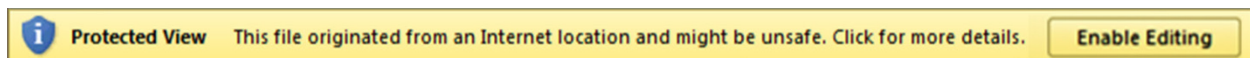
- 1) Open Excel
- 2) Select FILE >>> OPTIONS >>> TRUST CENTER >>> TRUST CENTER SETTINGS >>> MACRO SETTINGS
- 3) Check box adjacent to TRUST ACCESS TO THE VBA PROJECT OBJECT MODEL
- 4) Click PROTECTED VIEW
- 5) Uncheck the box adjacent to ENABLE PROTECTED VIEW FOR FILES ORIGINATING FROM THE INTERNET
- 6) Click OK
- 7) Close Excel



Excel settings to allow it to generate OnDemand Reports

Once the above settings have been adjusted the Excel template that has been installed on your computer will need to be opened to verify that it is not opening in Protected Mode.

- 1) Navigate to the template that is located at C:\Program Files (x86)\Cve\CveOnDemand
- 2) Open the file named CVEReportTemplate
- 3) If it has opened in Protected View, there will be a yellow message bar along the top of the Excel window, click on it then click **Enable Editing**



Excel's Protected View Header

Excel is now configured for use by OnDemand software.