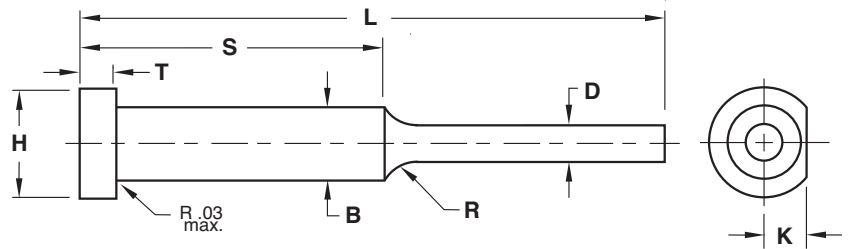


# CORE PINS

## SINGLE STEP



STANDARD TOLERANCES		
CORE PINS		
D	+0.0005 +0.0000	+0.02 +0.00
B	+0.0005 +0.0010	+0.01 +0.02
L	+0.06 -0.00	+1.5 -0.0
H	+0.000 -0.010	+0.00 -0.2
T	+0.000 -0.002	+0.00 -0.05
K	+0.000 -0.002	+0.00 -0.05
S	±0.03	±1.0
	INCH	METRIC

**Material:**

- Core Pin**  
 Material = H-13  
 Hard = 50-55 HRC  
 Soft = 30-35 HRC

**Other:**

Material	Core Hardness	Surface Hardness	Treatment

PIN #1			
Dimension	Tolerance		
<b>D</b>	<input type="checkbox"/> Standard Ejector Pin		+
	<input type="checkbox"/> Standard Core Pin		-
<b>B</b>	<input type="checkbox"/> Standard Ejector Pin		+
	<input type="checkbox"/> Standard Core Pin		-
<b>L</b>	<input type="checkbox"/> Standard		+
			-
<b>S</b>	<input type="checkbox"/> Standard		+
			-
<b>H</b>	<input type="checkbox"/> Standard		+
			-
<b>T</b>	<input type="checkbox"/> Standard		+
			-
<b>K</b>	<input type="checkbox"/> Standard		+
			-
<b>R</b>	<input type="checkbox"/> To Suit		+
			-
<b>Quantity:</b>			

PIN #2			
Dimension	Tolerance		
<b>D</b>	<input type="checkbox"/> Standard Ejector Pin		+
	<input type="checkbox"/> Standard Core Pin		-
<b>B</b>	<input type="checkbox"/> Standard Ejector Pin		+
	<input type="checkbox"/> Standard Core Pin		-
<b>L</b>	<input type="checkbox"/> Standard		+
			-
<b>S</b>	<input type="checkbox"/> Standard		+
			-
<b>H</b>	<input type="checkbox"/> Standard		+
			-
<b>T</b>	<input type="checkbox"/> Standard		+
			-
<b>K</b>	<input type="checkbox"/> Standard		+
			-
<b>R</b>	<input type="checkbox"/> To Suit		+
			-
<b>Quantity:</b>			

**E-MAIL TECH@PROCOMPS.COM**

CONTACT:	COMPANY NAME:	PHONE #:
REFERENCE #:	ACCOUNT #:	E-MAIL ADDRESS: