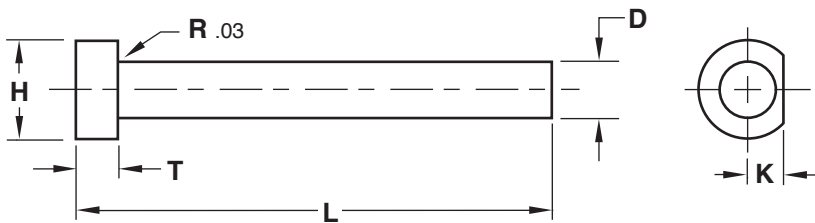




CORE / TI PINS

STRAIGHT



STANDARD TOLERANCES		
CORE PINS		
D	+0.0010	+0.02
	+0.0005	+0.01
TI PINS		
D	+0.0003	+0.008
	-0.0000	-0.000
T	+0.000	+0.00
	-0.002	-0.05
H	+0.000	+0.0
	-0.010	-0.2
L	+0.060	+1.5
	-0.000	-0.0
K	+0.000	+0.00
	-0.002	-0.05
	INCH	METRIC

Material:

- Core Pin** **TI Pin**
 Material = H-13 Material = M-2
 Hard = 50-55 HRC Core = 60-64 HRC
 Soft = 30-35 HRC

Other:

Material	Core Hardness	Surface Hardness	Treatment

PIN #1			
Dimension	Tolerance		
D	<input type="checkbox"/> Standard Core Pin		+
	<input type="checkbox"/> Standard TI Pin		-
H	<input type="checkbox"/> Standard		+
			-
T	<input type="checkbox"/> Standard		+
			-
L	<input type="checkbox"/> Standard		+
	<input type="checkbox"/> Finished Length (+.001/-0.000)		-
K	<input type="checkbox"/> Standard		+
			-
R	<input type="checkbox"/> .03 (.75mm)		+
	<input type="checkbox"/> .06 (1.5mm)		-
Quantity:			

PIN #2			
Dimension	Tolerance		
D	<input type="checkbox"/> Standard Core Pin		+
	<input type="checkbox"/> Standard TI Pin		-
H	<input type="checkbox"/> Standard		+
			-
T	<input type="checkbox"/> Standard		+
			-
L	<input type="checkbox"/> Standard		+
	<input type="checkbox"/> Finished Length (+.001/-0.000)		-
K	<input type="checkbox"/> Standard		+
			-
R	<input type="checkbox"/> .03 (.75mm)		+
	<input type="checkbox"/> .06 (1.5mm)		-
Quantity:			

E-MAIL TECH@PROCOMPS.COM		
CONTACT:	COMPANY NAME:	PHONE #:
REFERENCE #:	ACCOUNT #:	E-MAIL ADDRESS: