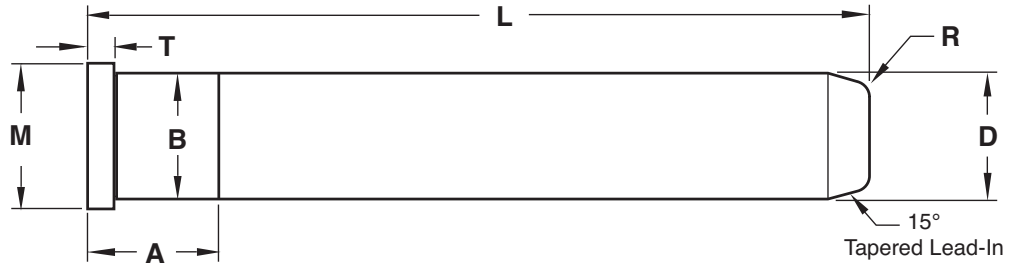


LEADER PINS

STRAIGHT



STANDARD TOLERANCES		
D	+0.0000 -0.0005	+0.00 -0.01
B	+0.0005 -0.0000	+0.01 -0.00
A	+0.000 -0.030	+0.0 -1.0
L	+0.000 -0.030	+0.0 -1.0
M	+0.000 -0.010	+0.0 -0.2
T	+0.000 -0.002	+0.00 -0.05
	INCH	METRIC

Material:
 AISI 1117
 Surface = 58-62 HRC
 Core = 20-22 HRC

Treatment:
 Black Nitride

PIN #1			
Dimension	Tolerance		
D	<input type="checkbox"/> Standard		+
			-
B	<input type="checkbox"/> Standard		+
			-
A	<input type="checkbox"/> Standard		+
			-
L	<input type="checkbox"/> Standard		+
			-
M	<input type="checkbox"/> Standard		+
			-
T	<input type="checkbox"/> Standard		+
			-
R	<input type="checkbox"/> 1/16 for D = 1 1/4 max. <input type="checkbox"/> 3/16 for D over 1 1/4		
Quantity:			

PIN #2			
Dimension	Tolerance		
D	<input type="checkbox"/> Standard		+
			-
B	<input type="checkbox"/> Standard		+
			-
A	<input type="checkbox"/> Standard		+
			-
L	<input type="checkbox"/> Standard		+
			-
M	<input type="checkbox"/> Standard		+
			-
T	<input type="checkbox"/> Standard		+
			-
R	<input type="checkbox"/> 1/16 for D = 1 1/4 max. <input type="checkbox"/> 3/16 for D over 1 1/4		
Quantity:			

E-MAIL TECH@PROCOMPS.COM

CONTACT:	COMPANY NAME:	PHONE #:
REFERENCE #:	ACCOUNT #:	E-MAIL ADDRESS: