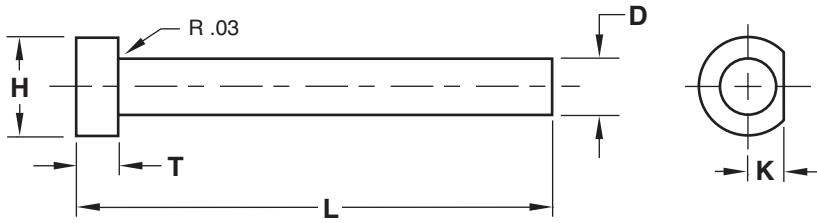




EJECTOR PINS

STRAIGHT



STANDARD TOLERANCES		
EJECTOR PIN		
D	-0.0004	-0.01
	-0.0007	-0.02
CORE PINS		
D	+0.0010	+0.02
	+0.0005	+0.01
TI PINS		
D	+0.0003	+0.008
	-0.0000	-0.000
T	+0.000	+0.00
	-0.002	-0.05
H	+0.000	+0.0
	-0.010	-0.2
L	+0.060	+1.5
	-0.000	-0.0
K	+0.000	+0.00
	-0.002	-0.05
	INCH	METRIC

- Material:**
- Ejector Pin**
Material = H-13
Core = 48-50 HRC
Surface = 65-70 HRC
 - Ultra Pin**
Material = H-13
Core = 48-50 HRC
Surface = 65-70 HRC
Treatment = Chrome
Final pin tolerances: -.0003/- .0006
 - Core Pin**
Material = H-13
 Hard = 50-55 HRC
 Soft = 30-35 HRC
 - TI Pin**
Material = M-2
Core = 60-64 HRC

Material	Core Hardness	Surface Hardness	Treatment

PIN #1			
Dimension	Tolerance		
D	<input type="checkbox"/> Standard Ejector Pin	+	
	<input type="checkbox"/> Standard Core Pin	-	
	<input type="checkbox"/> Standard TI Pin		
H	<input type="checkbox"/> Standard	+	
		-	
T	<input type="checkbox"/> Standard	+	
		-	
L	<input type="checkbox"/> Standard	+	
		-	
K	<input type="checkbox"/> Standard	+	
		-	
Quantity:			

PIN #2			
Dimension	Tolerance		
D	<input type="checkbox"/> Standard Ejector Pin	+	
	<input type="checkbox"/> Standard Core Pin	-	
	<input type="checkbox"/> Standard TI Pin		
H	<input type="checkbox"/> Standard	+	
		-	
T	<input type="checkbox"/> Standard	+	
		-	
L	<input type="checkbox"/> Standard	+	
		-	
K	<input type="checkbox"/> Standard	+	
		-	
Quantity:			

E-MAIL TECH@PROCOMPS.COM		
CONTACT:	COMPANY NAME:	PHONE #:
REFERENCE #:	ACCOUNT #:	E-MAIL ADDRESS: