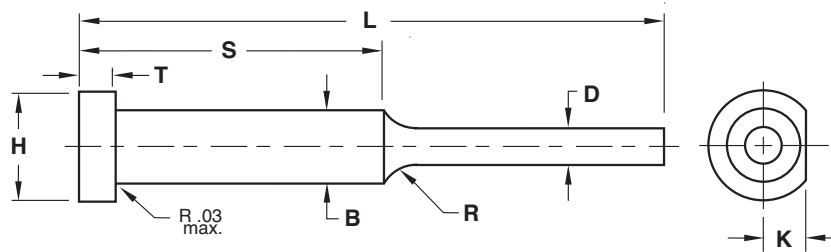


EJECTOR PINS

SINGLE STEP



STANDARD TOLERANCES		
EJECTOR PINS		
D	-0.0004 -0.0007	-0.01 -0.02
B	+0.0005 -0.001	+0.00 -0.02
CORE PINS		
D	+0.0005 +0.0000	+0.02 +0.00
B	+0.0005 +0.0010	+0.01 +0.02
L	+0.06 -0.00	+1.5 -0.0
H	+0.000 -0.010	+0.00 -0.2
T	+0.000 -0.002	+0.00 -0.05
K	+0.002 -0.000	+0.05 -0.00
S	±0.03	±1.0
	INCH	METRIC

Material:

- Ejector Pin**
Material = H-13
Core = 48-50 HRC
Surface = 65-70 HRC
- Ultra Pin**
Material = H-13
Core = 48-50 HRC
Surface = 65-70 HRC
Treatment = Chrome
Final pin tolerances: -.0003/-0.0006
- Core Pin**
Material = H-13
 Hard = 50-55 HRC
 Soft = 30-35 HRC

Other:

Material	Core Hardness	Surface Hardness	Treatment

PIN #1			
Dimension	Tolerance		
D	<input type="checkbox"/> Standard Ejector Pin		+
	<input type="checkbox"/> Standard Core Pin		-
B	<input type="checkbox"/> Standard Ejector Pin		+
	<input type="checkbox"/> Standard Core Pin		-
L	<input type="checkbox"/> Standard		+
			-
S	<input type="checkbox"/> Standard		+
			-
H	<input type="checkbox"/> Standard		+
			-
T	<input type="checkbox"/> Standard		+
			-
K	<input type="checkbox"/> Standard		+
			-
R	<input type="checkbox"/> To Suit		+
			-
Quantity:			

PIN #2			
Dimension	Tolerance		
D	<input type="checkbox"/> Standard Ejector Pin		+
	<input type="checkbox"/> Standard Core Pin		-
B	<input type="checkbox"/> Standard Ejector Pin		+
	<input type="checkbox"/> Standard Core Pin		-
L	<input type="checkbox"/> Standard		+
			-
S	<input type="checkbox"/> Standard		+
			-
H	<input type="checkbox"/> Standard		+
			-
T	<input type="checkbox"/> Standard		+
			-
K	<input type="checkbox"/> Standard		+
			-
R	<input type="checkbox"/> To Suit		+
			-
Quantity:			

E-MAIL TECH@PROCOMPS.COM

CONTACT:	COMPANY NAME:	PHONE #:
REFERENCE #:	ACCOUNT #:	E-MAIL ADDRESS: